

PRODUCT LEAFLET

NOM 28

Oil mist filter



NOM 28





- ✓ Low maintenance cost
- ✓ Self draining mist filter
- ✓ Easy to install
- ✓ High filtration efficiency
- ✓ Made to take up very little space with integrated fan for most models

Designed for lathing and milling applications, for machines stamping and pressing steel plates, industrial washing machines, abrasive water jets etc. In all metal fabrication with oil mist troubles, these filters will fit into a ducting system, connected to each machine. All units are equipped with pressure gauge for control of filters as well as an indication for need of cleaning (self draining). Suitable for emulsion mist.

NOM 28

[ProductCertifications]	[ce]
[ProductNoiselevel]	68,2
[ProductProtectionclass]	IP 55
[ProductFilterefficiency]	97,5
[ProductCompressedairconsumption]	No
[ProductInstallation]	[Indoor]
[ProductMaterial]	Housing made in oil resistant wet painted sheet metal.
[ProductSuitableForCombustableDust]	False
[ProductMaterialrecycling]	88
[ProductFilterArea]	21
[ProductCapacityMax]	2800
[ProductOperatingTemperature]	5 - 60 C
[ItemFilterType]	[cartridge]
[ItemNbrofFilterElements]	3

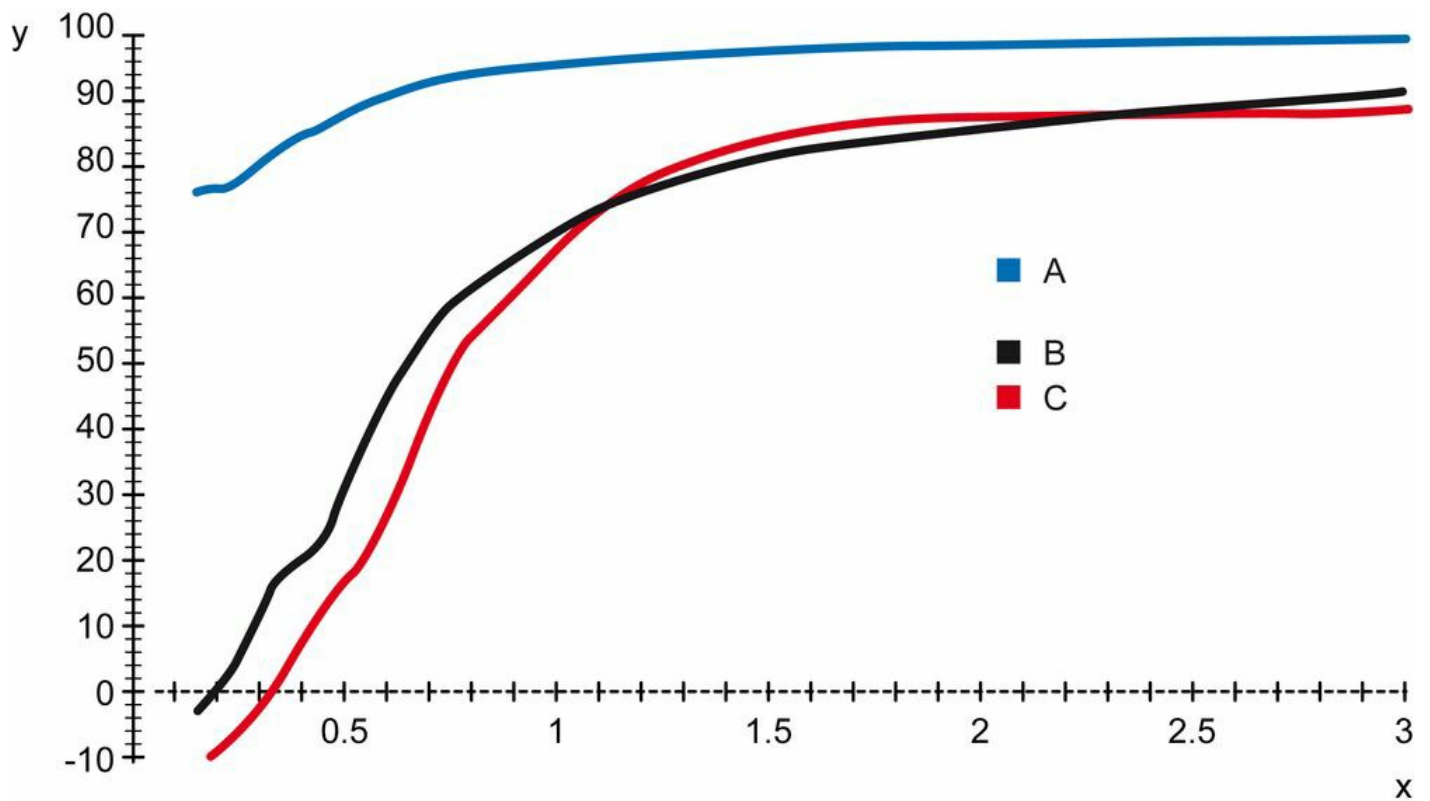
Models

	Item number	[ItemWeight]	[ItemPowerVoltage]	[ItemFrequency]	[ItemNoofphases]	[ItemAmperage]
	12642368 ^[1]	189				
	12642468 ^[2]	199				
	12641768 ^[3]	230	400/230	50	3	4,56/7,9
	12641868 ^[4]	240	400/230	50	3	4,56/7,9

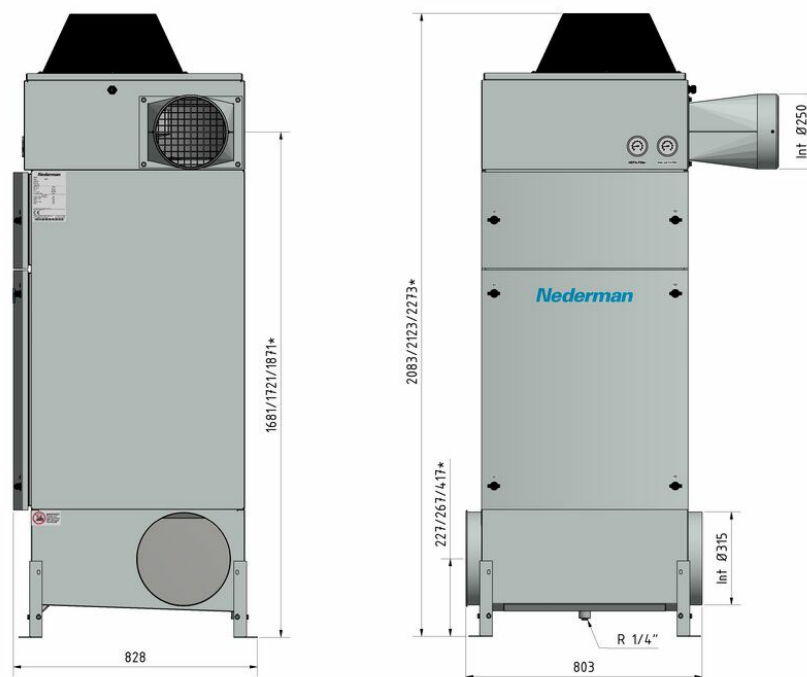
^[1] Delivered without Fan
^[2] Delivered without Fan. Includes HEPA filter with 40 sqm filterarea and with 99,97 % efficiency.
^[3] null
^[4] Includes HEPA filter with 40 sqm filterarea and with 99,97 % efficiency.

Accessories

	Accessory	Item number
	FMS 6.3-10 Fan Manual Starter	14502537
	Silencer NOM 18	12373650
	Filter cover for NOM filter	12376746
	Container NOM 11, 18, 28	12373651
	Hose with oil trap NOM	12373652
	Prefilter 21m2 NOM 28	12373680
	HEPA 40m2 NOM 28	12373648
	Coarse pre-filter	12376294



Y = Efficiency (%), X = Particle size (µm) A = NOM filter, B = Centrifugal filter A, C = Centrifugal filter B Efficiency of NOM main filter compared to typical centrifugal filters, tested with DOP.



*dim. without extension legs/nominal/with extension legs

